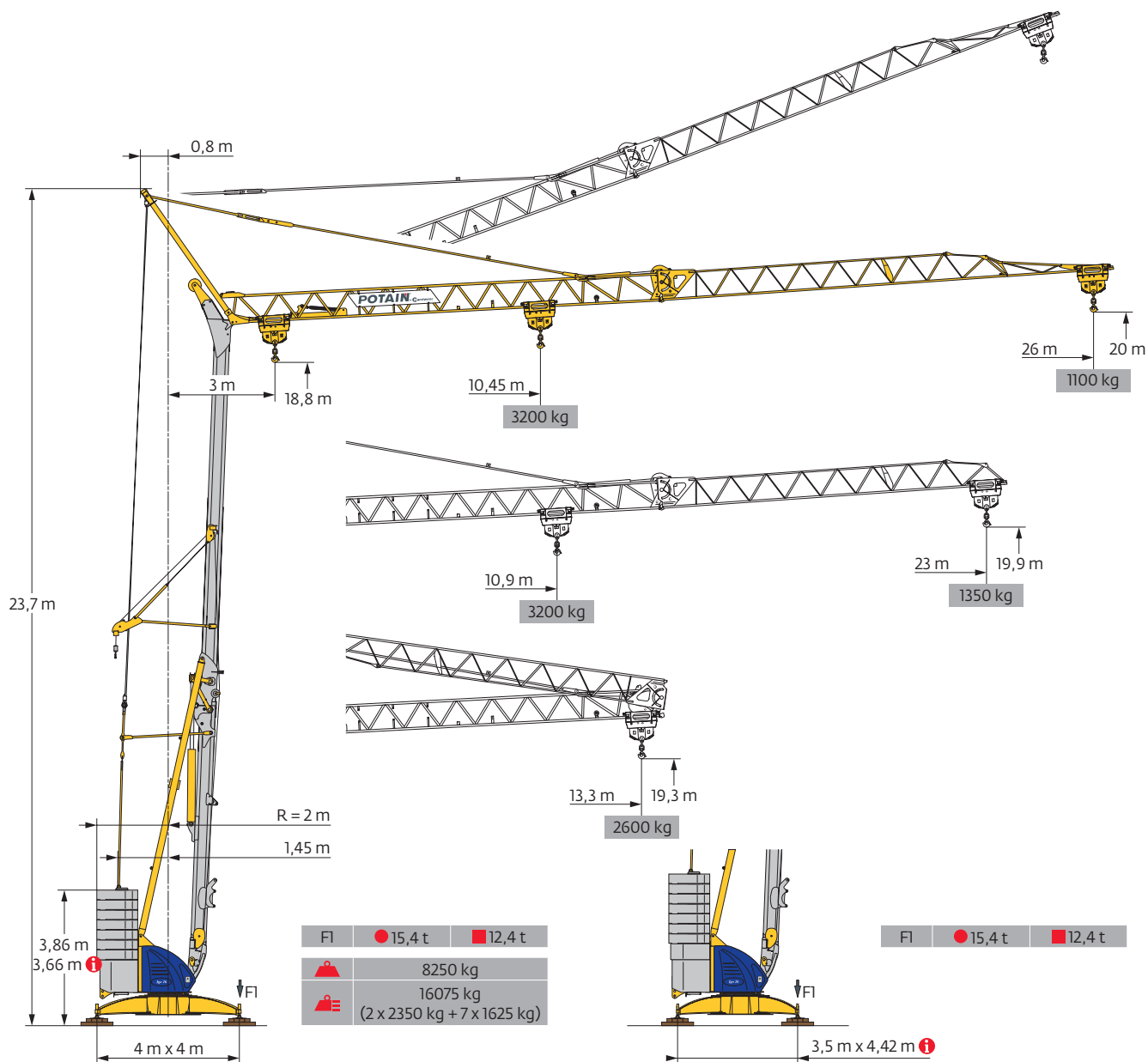
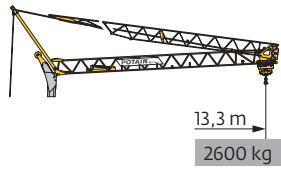


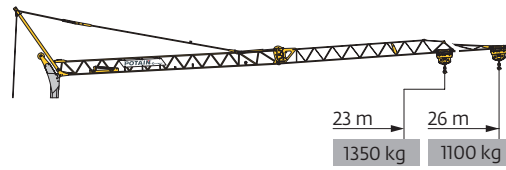
Potain Igo 26



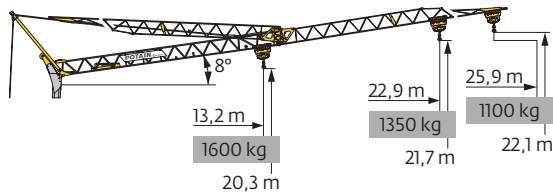
Courbes de charges / Lastkurven / Load curves / Curvas de cargas / Curve di carico
 Curvas de carga / Кривые нагрузок



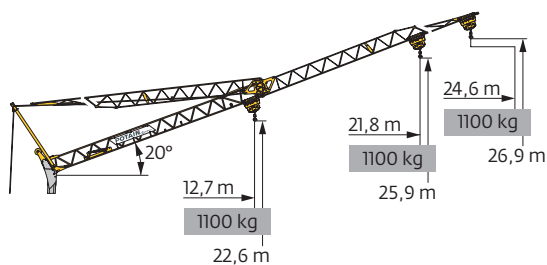
| | | | | | | |
|------|---|---|------|------|------|----|
| 26 m | 3 | ▶ | 11,3 | 12 | 13,3 | m |
| ▲▲▲ | | | 3200 | 2960 | 2600 | kg |
| | | | | 1600 | | kg |
| | | | | 1600 | | kg |
| 23 m | 3 | ▶ | 11,3 | 12 | 13,3 | m |
| ▲▲▲ | | | 3200 | 2960 | 2600 | kg |
| | | | | 1600 | | kg |
| | | | | 1600 | | kg |



| | | | | | | | | | | | | | | | | | |
|------|------|------|------|------|------|------|------|------|------|------|------|------|------|------|------|------|----|
| 10,5 | 11 | 12 | 13 | 14 | 15 | 16 | 17 | 18 | 19 | 20 | 21 | 22 | 23 | 24 | 25 | 26 | m |
| 3200 | 2995 | 2680 | 2420 | 2200 | 2020 | 1860 | 1725 | 1600 | 1495 | 1405 | 1320 | 1240 | 1175 | 1110 | 1055 | 1000 | kg |
| | | | | | | | | 1600 | 1495 | 1405 | 1320 | 1240 | 1175 | 1110 | 1055 | 1000 | kg |
| | | | | | | | | 1600 | 1515 | 1425 | 1350 | 1275 | 1215 | 1155 | 1100 | | kg |
| 10,9 | 11 | 12 | 13 | 14 | 15 | 16 | 17 | 18 | 19 | 20 | 21 | 22 | 23 | | | | m |
| 3200 | 3170 | 2840 | 2565 | 2335 | 2140 | 1975 | 1830 | 1705 | 1600 | 1495 | 1405 | 1325 | 1250 | | | | kg |
| | | | | | | | | | 1600 | 1495 | 1405 | 1325 | 1250 | | | | kg |
| | | | | | | | | | 1600 | 1505 | 1425 | 1350 | | | | | kg |



| | | | | | | | | | | | | | |
|------|---|---|--|------|------|------|------|------|------|------|------|------|----|
| 26 m | 3 | ▶ | | 18 | 19 | 20 | 21 | 22 | 23 | 24 | 25 | 25,9 | m |
| ▲▲▲ | | | | 1600 | 1490 | 1395 | 1310 | 1235 | 1165 | 1105 | 1045 | 1000 | kg |
| | | | | | 1600 | 1505 | 1420 | 1340 | 1270 | 1210 | 1150 | 1100 | kg |
| 23 m | 3 | ▶ | | 18,9 | 19 | 19,9 | 20 | 21 | 22 | 22,9 | | | m |
| ▲▲▲ | | | | 1600 | 1585 | 1495 | 1485 | 1395 | 1315 | 1250 | | | kg |
| | | | | | 1600 | 1590 | 1500 | 1415 | 1350 | | | | kg |



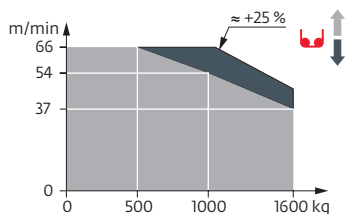
| | | | | | | | | | | | | | |
|------|---|---|--|--|--|--|--|--|--|--|------|------|----|
| 26 m | 3 | ▶ | | | | | | | | | | 24,6 | m |
| ▲▲▲ | | | | | | | | | | | | 1000 | kg |
| | | | | | | | | | | | | 1100 | kg |
| 23 m | 3 | ▶ | | | | | | | | | 21,8 | m | |
| ▲▲▲ | | | | | | | | | | | 1000 | kg | |
| | | | | | | | | | | | 1100 | kg | |

Mécanismes / Triebwerke / Mechanisms / Mecanismos / Meccanismi
 Mecanismos / Механизмы

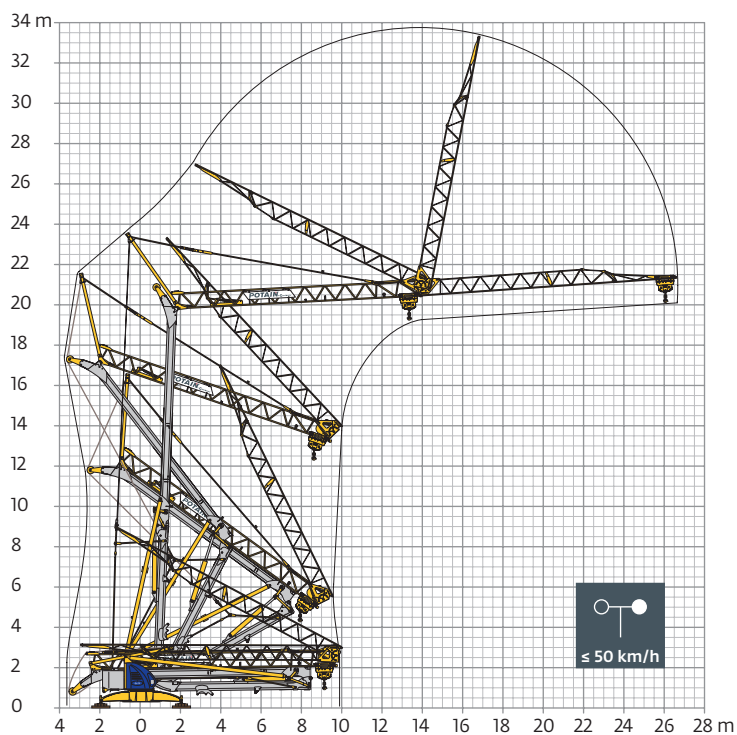
| 400 V - 50 Hz 480 V - 60 Hz | | | | | | | | | | | | ch - PS hp | kW | |
|--------------------------------|-----------------------------|------------------------|--|------|------|------|-----|------|------|------|------|---------------|-----|----|
| | 15 LVF 10 Optima | m/min | 3,6 | 18 | 37 | 54 | 66 | 1,8 | 9 | 18,5 | 27 | 33 | 15 | 11 |
| | | kg | 1600 | 1600 | 1600 | 1000 | 500 | 3200 | 3200 | 3200 | 2000 | 1000 | | |
| | 3 DVF 5 | m/min | 19 - 45 (0 → 1000 kg) 19 - 41 (1000 → 3200kg) | | | | | | | | | 3 | 2,2 | |
| | RVF 31 Optima+ | tr/min U/min rpm | 0 → 0,8 | | | | | | | | | 2 | 1,5 | |

| | IEC 60204-32 | | kVA |
|--|---|--|------------|
| | 400 V (+10% -10%) 50 Hz 480 V (+6% -10%) 60 Hz | | 20 kVA |

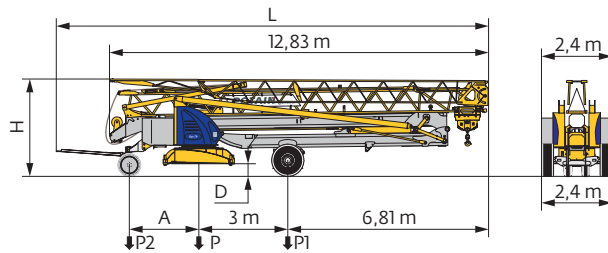
15 LVF 10 Optima



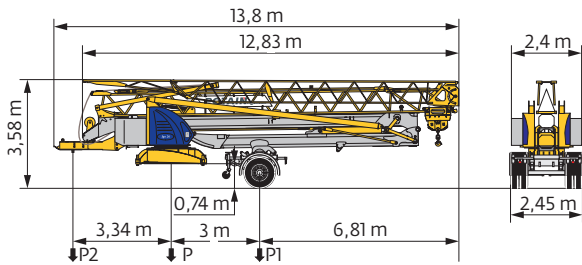
Montage / Montage / Erection / Montaje / Montaggio
 Montagem / Монтаж



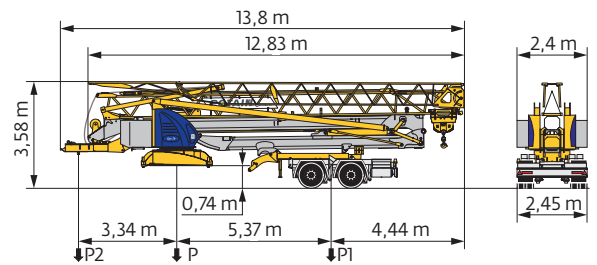
Transport / Transport / Transport / Transporte / Trasporto
Transporte / Транспортировка



| | km/h | A (m) | D (m) | H (m) | L (m) | P (kg) | P1 (kg) | P2 (kg) |
|--------------|------|-------|-----------|----------|-------|--------|---------|---------|
| DS62/S120 | 10 | 2,35 | 0,36/0,21 | 3,2/3,05 | 14,48 | 13860 | 9000 | 4860 |
| DS61/S125 | 25 | 2,45 | 0,36/0,21 | 3,2/3,05 | 14,77 | 14205 | 9290 | 4915 |
| /..... | | | | | | | | |



| | km/h | P (kg) | P1 (kg) | P2 (kg) |
|--------------|------|--------|---------|---------|
| SL121/J135 | 25 | 15120 | 10920 | 4200 |
| /..... | | | | |



| | km/h | P (kg) | P1 (kg) | P2 (kg) |
|--------------|------|--------|---------|---------|
| SL122/J215M | 80 | 16190 | 9510 | 6670 |
| /..... | | | | |

FR

DE

EN

ES

IT

PT

RU

| | | | | | | | |
|------------|---|---|---|--|---|--|--|
| R | Rayon de giration | Schwenk radius | Rear slewing radius | Radio de giro | Raggio di rotazione | Raio de rotação | Задний габарит |
| i | Nous consulter | Auf Anfrage | Consult us | Consultarnos | Consultateci | Consultar-nos | Проконсультируйтесь у нас |
| ● | Réactions en service | Reaktionskräfte in Betrieb | Reactions in service | Reacciones en servicio | Reazioni in servizio | Reacções em serviço | Реакция при работе |
| ■ | Réactions hors service | Reaktionskräfte außer Betrieb | Reactions out of service | Reacciones fuera de servicio | Reazioni fuori servizio | Reacções fora de serviço | Реакция в покое |
| ▲ | Poids à vide, sans lest, sans trains de transport, avec flèche maxi. et hauteur standard. | Gewicht ohne Last, ohne Ballast, ohne Transportachsen, mit max. Auslager und Standardhöhe | Weight without load, without ballast, without transport axes, with max. jib and standard height | Peso en vacío, sin lastre, sin trenes de transporte con flecha y altura estandar | Peso a vuoto, senza zavorra, senza assali di trasporto, con braccio max e altezza standard. | Peso em vazio, sem lastro, sem eixos de transporte com lança máxima e altura standard. | Вес без груза, без балласта, без осей для транспортировки, с максимальным вылетом стрелы и стандартной высотой |
| ▲ | Poids total du lest | Ballast-Gesamtgewicht | Total ballast weight | Peso total del lastre | Peso totale della zavorra | Peso total do lastro | Общий вес балласта |
| ♦ | Levage | Heben | Hoisting | Elevación | Sollevamento | Elevação | Подъем |
| ♦ | Distribution | Katzfahren | Trolleying | Distribución | Distribuzione | Distribuição | Перемещение по стреле |
| ○ | Orientation | Schwenken | Slewing | Orientación | Rotazione | Rotação | Поворот |
| kVA | Puissance nominale | Nennleistung | Rated power | Potencia nominal | Potenza nominale | Potência nominal | Номинальная мощность |

| | | | | | | | |
|----------|--|--|---|---|---|---|---|
| ⚠ | Document commercial non contractuel. Pour toute information technique se référer à la notice correspondante. | Unverbindliches Vertriebsdokument. Für technische Informationen, siehe die entsprechenden Anweisungen. | This commercial document is not legally binding. For any technical information, please refer to the corresponding instructions. | Documento comercial no contractual. Para cualquier información técnica, ver la noticia correspondiente. | Documento commerciale non vincolante, per tutte le informazioni tecniche fare riferimento al catalogo istruzioni. | Documento comercial não contractual. Para qualquer informação técnica complementar consultar as respectivas instruções. | Этот коммерческий документ не является юридически обязательным. Для получения технической информации, см. соответствующие инструкции. |
|----------|--|--|---|---|---|---|---|



Manitowoc - Americas
Manitowoc, Wisconsin, USA
Tel: +1 920 684 6621
Fax: +1 920 683 6277

Shady Grove, Pennsylvania, USA
Tel: +1 717 597 8121
Fax: +1 717 597 4062

Manitowoc - Europe, Middle East & Africa
Ecully, France
Tel: +33 (0)4 72 18 20 20
Fax: +33 (0)4 72 18 20 00

Manitowoc - Asia & Pacific
Shanghai, China
Tel: +86 21 6457 0066
Fax: +86 21 6457 4955